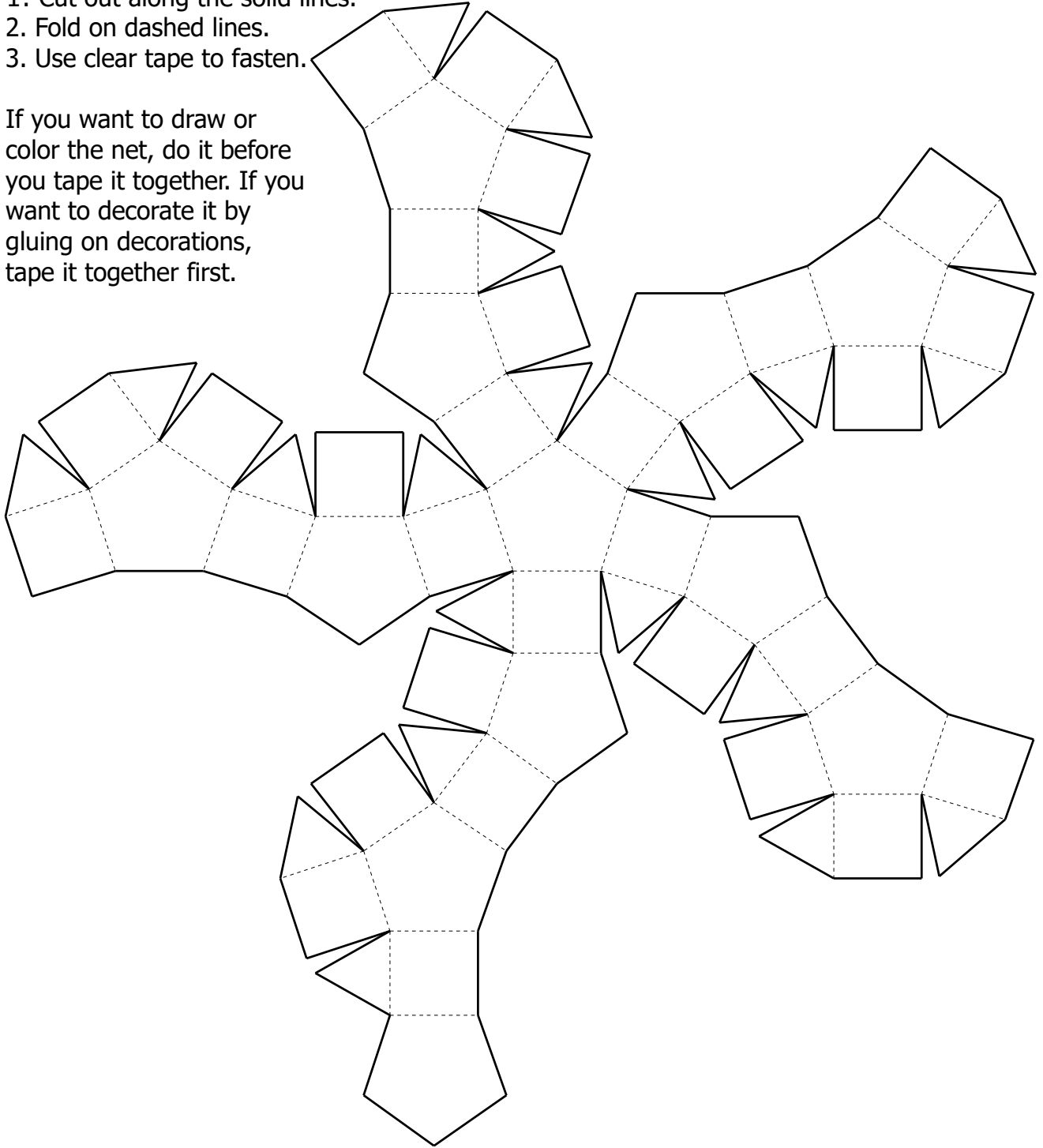


Geometric Net of a Rhombicosidodecahedron

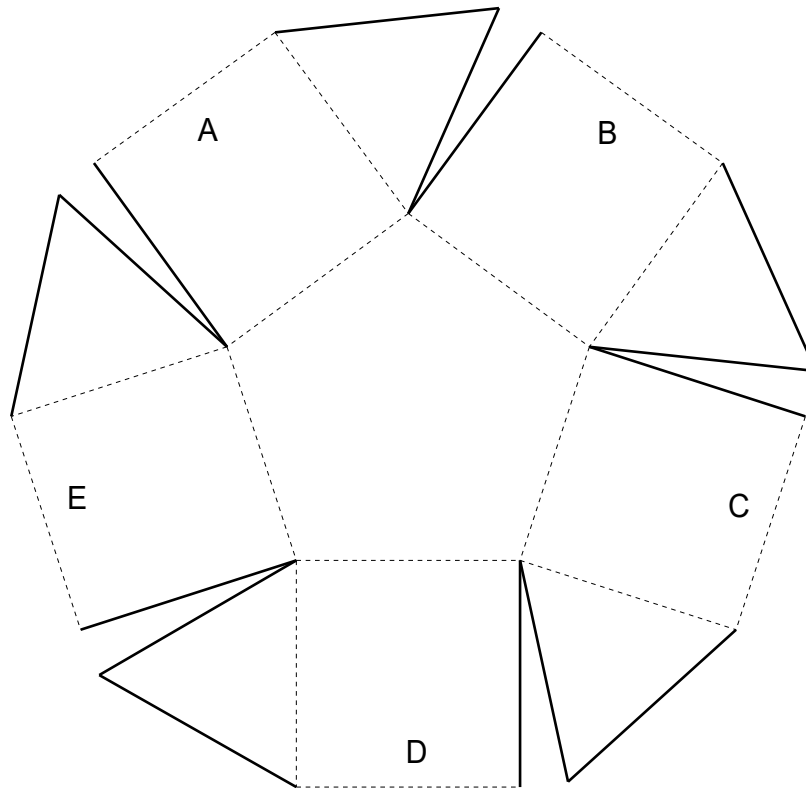
1. Cut out along the solid lines.
2. Fold on dashed lines.
3. Use clear tape to fasten.

If you want to draw or color the net, do it before you tape it together. If you want to decorate it by gluing on decorations, tape it together first.



Geometric Net of a Rhombicosidodecahedron

Large net of a rhombicosidodecahedron.



Geometric Net of a Rombicosidodecahedron

